

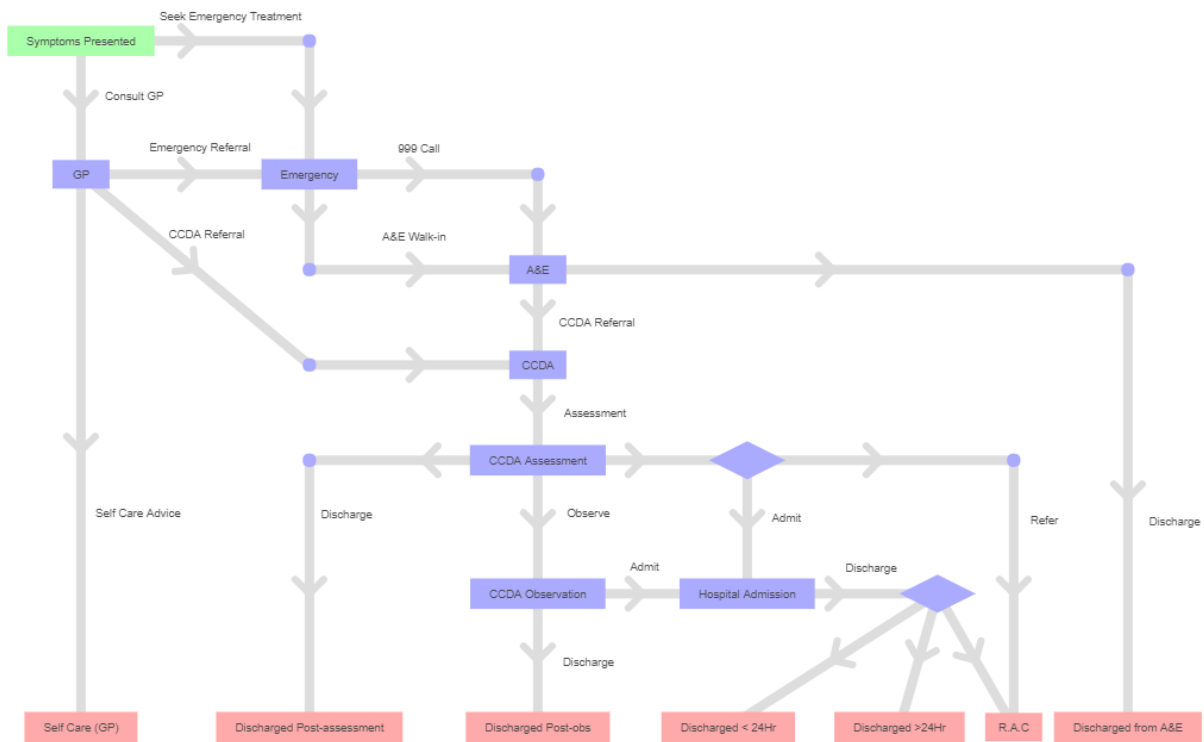
# NETIMIS

## REFERENCE DOCUMENT

Client: Bradford Royal Infirmary

Pathway: Paediatric Ambulatory Care (Future Pathway)

## Pathway: Paediatric Ambulatory Care (Future Pathway)



Online at: <https://www.netimis.co.uk/shared/5981929cfe17360c17cb4121>

### Brief

This model has been created as part of a project with Bradford Royal Infirmary (BRI) and Bradford Institute for Health Research in collaboration with X-Lab. This model enables the visualisation of replacing the Children's Assessment Unit (CAU) with a Children's Clinical Decision Area (CCDA) to explore whether there is a reduction in hospital admission rates.

This document provides detail of the settings specified in the NETIMIS model such as capacity, time, cost and probability.

### Client

As part of Bradford Teaching Hospital NHS Foundation Trust, BRI aims to provide effective inpatient services for Bradford and other communities across Yorkshire. The children's services provided by BRI include inpatient wards, an outpatient department, community services and a CAU. The CAU is an ambulatory care facility which allows children to be assessed and observed by paediatric specialists, following referral from A&E/GP.

### Model

The model suggests using CCDA Rapid Access Clinic ambulatory care pathway in various probabilities (5%, 10% and 15%) as an alternative to reduce short-stay hospital admission rates. CCDA is an upgraded version of CAU with additional facilities; thus, providing better capacity to accommodate patients' needs. Detailed in this document is the evidence base used to determine the various settings in NETIMIS, such as capacity, time, cost and probability.

Pathway Settings				
Activity	Time (hrs)	Cost	Probability	C.I.*
Symptoms Presented			Consult GP – 85% Seek Emergency Treatment – 15%	2

GP Pathway – 5%				
Activity	Time (hrs)	Cost	Probability/Next pathway	C.I.*
Consult GP		£25	Self-Care Advice – 80% CCDA Referral – 15% Emergency Referral – 5%	3
Self-Care Advice provided			Self-Care (GP)	5
CCDA Referral			Transfer into CCDA	5
CCDA (Capacity = 5)		£222	CCDA Assessment	4
CCDA Assessment			Discharged Post-assessment – 65% CCDA Observation – 20% Internal Transfer – 15%	3
CCDA Observation (Capacity = 9)	1	£430	Discharged Post-observation – 90% Hospital Admission – 10%	4
Internal Transfer			Admit – 66.67% Refer – 33.33%	1
Admit			Hospital Admission	5
Refer			R.A.C	5
Hospital Admission		£520 £1300 -	Discharged <24Hr – 90% Discharged >24Hr – 5% R.A.C – 5%	3

Emergency Pathway				
Activity	Time (hrs)	Cost	Probability/Next pathway	C.I.*
Seek Emergency Treatment			Enter Emergency unit	5
Enter Emergency unit			999 Call – 17% A&E Walk-in – 83%	3
999 Call		£170	A&E	4
A&E Walk-in		£87	A&E	4
A&E			Discharged from A&E – 90%	4

			CCDA Referral – 10%	
CCDA Referral			Transfer into CCDA	5
CCDA (Capacity: 5)		£222	CCDA Assessment	4
CCDA Assessment			Discharged Post-assessment – 65% CCDA Observation – 20% Internal Transfer– 15%	3
CCDA Observation (Capacity = 9)	1	£430	Discharged Post-observation – 90% Hospital Admission – 10%	4
Internal Transfer			Admit – 66.67% Refer – 33.33%	1
Admit			Hospital Admission	5
Refer			R.A.C	5
Hospital Admission		£520 £1300 -	Discharged <24Hr – 90% Discharged >24Hr – 5% R.A.C – 5%	3

<b>GP Pathway – 10%</b>				
<b>Activity</b>	<b>Time (hrs)</b>	<b>Cost</b>	<b>Probability/Next pathway</b>	<b>C.I.*</b>
Consult GP		£25	Self-Care Advice – 80% CCDA Referral – 15% Emergency Referral – 5%	3
Self-Care Advice provided			Self-Care (GP)	5
CCDA Referral			Transfer into CCDA	5
CCDA (Capacity = 5)		£222	CCDA Assessment	4
CCDA Assessment			Discharged post-assessment – 60% CCDA Observation – 20% Internal Transfer – 20%	3
CCDA Observation (Capacity = 9)	1	£430	Discharged Post-observation – 90% Hospital Admission – 10%	4
Internal Transfer			Admit – 65% Refer – 35%	1
Admit			Hospital Admission	5
Refer			R.A.C	5
Hospital Admission		£520 £1300 -	Discharged <24Hr – 85% Discharged >24Hr – 5% R.A.C – 10%	3

<b>Emergency Pathway</b>				
<b>Activity</b>	<b>Time (hrs)</b>	<b>Cost</b>	<b>Probability/Next pathway</b>	<b>C.I.*</b>
Seek Emergency Treatment			Enter Emergency unit	5
Enter Emergency unit			999 Call – 17% A&E Walk-in – 83%	3
999 Call		£170	A&E	4
A&E Walk-in		£87	A&E	4
A&E			Discharged from A&E – 90% CCDA Referral – 10%	4
CCDA Referral			Transfer into CCDA	5
CCDA (Capacity = 5)		£222	CCDA Assessment	4
CCDA Assessment			Discharged post-assessment – 60% CCDA Observation – 20% Internal Transfer – 20%	3
CCDA Observation (Capacity = 9)	1	£430	Discharged Post-observation – 90% Hospital Admission – 10%	4
Internal Transfer			Admit – 65% Refer – 35%	1
Admit			Hospital Admission	5
Refer			R.A.C	5
Hospital Admission		£520 £1300 -	Discharged <24Hr – 85% Discharged >24Hr – 5% R.A.C – 10%	3

<b>GP Pathway – 15%</b>				
<b>Activity</b>	<b>Time (hrs)</b>	<b>Cost ***</b>	<b>Probability/Next pathway</b>	<b>C.I.*</b>
Consult GP		£25	Self-Care Advice – 80% CCDA Referral – 15% Emergency Referral – 5%	3
Self-Care Advice provided			Self-Care (GP)	5
CCDA Referral			Transfer into CCDA	5
CCDA (Capacity = 5)		£222	CCDA Assessment	4
CCDA Assessment			Discharged Post-assessment – 55% CCDA Observation – 20% Internal Transfer – 25%	3
CCDA Observation (Capacity = 9)	1	£430	Discharged Post-observation – 90% Hospital Admission – 10%	4

Internal Transfer			Admit – 40% Refer – 60%	1
Admit			Hospital Admission	5
Refer			R.A.C	5
Hospital Admission		£520 £1300 -	Discharged <24Hr – 80% Discharged >24Hr – 5% R.A.C – 15%	3

<b>Emergency Pathway</b>				
<b>Activity</b>	<b>Time (hrs)</b>	<b>Cost</b>	<b>Probability/Next pathway</b>	<b>C.I.*</b>
Seek Emergency Treatment			Enter Emergency unit	5
Enter Emergency unit			999 Call – 17% A&E Walk-in – 83%	3
999 Call		£170	A&E	4
A&E Walk-in		£87	A&E	4
A&E			Discharged from A&E – 90% CCDA Referral – 10%	4
CCDA Referral			Transfer into CCDA	5
CCDA (Capacity = 5)		£222	CCDA Assessment	4
CCDA Assessment			Discharged Post-assessment – 55% CCDA Observation – 20% Internal Transfer– 25%	3
CCDA Observation (Capacity = 9)	1	£430	Discharged Post-observation – 90% Hospital Admission – 10%	4
Internal Transfer			Admit – 40% Refer – 60%	1
Admit			Hospital Admission	5
Refer			R.A.C	5
Hospital Admission		£520 £1300 -	Discharged <24Hr – 80% Discharged >24Hr – 5% R.A.C – 15%	3

\* C.I. is a Confidence Indicator for confidence in the evidence base used to construct the model based on a score of 1-5 with 5 being highest (0=No confidence/ not applicable; 1=Guess by Modeller; 2=Estimate from Domain Expert; 3=Empirical evidence for direct observation/ Extrapolation from published literature; 4=Multiple reliable sources; 5=Confirmed through Expert Review Board).